

TECHNICAL RIDER SALA BARTS - BARCELONA ARTS ON STAGE

BARTS is a venue located at Barcelona city centre where most important theatres are.

BARTS
Avda. Paral.lel, 62
08001 BARCELONA

<http://www.barts.cat>



STAGE

Due to the full configuration possibilities of the venue and in order to do the best in terms of audience comfort, we have two different stage configurations as described below.

When audience is seated:

Width: 9 m.

Depth: 8,5 m.

Slope: 0 %

When audience is standing:

Width: 8 m.

Depth: 6 m.

Slope: 0 %

To increase audience visibility on shows with standing audience we are forced to install an extra platform on stage as described above at 0,40 m. high.

DROPERY

Main Border: Made in red velvet, fireproofed type 1 and located in BAR 00.

Front Curtain: Made in red velvet, fireproofed type 1, automatic opening in guillotine style located at BAR 01.

Borders: 4 borders size 12 m x 2 m each, made with fireproof scenic black wool type 1.

Legs: 4, 2 pieces legs (8units total) de 7 m x 3 m, made with fireproof scenic black wool type 1.

Black Back Drop: 1 two pieces black back drop 12 m x 6,5 m, made with fireproof scenic black wool type 1

DRESSING ROOMS

There are **5 full equipped dressing rooms** on 1st and 2nd floor. All of them properly lighted, with air conditioned, mirrors, make-up mirrors, tables, chairs, wardrobe and hangers, bathroom and showers.

There are as well **4 more dressing rooms** -1 level down stage, full equipped with shared bathrooms and showers.

SOUND AND LIGHTING EQUIPMENT

The Venue has his own lighting and audio equipment.
Sound equipment CAN NOT BE uninstalled.

As per government restrictions there is limitation of 95 dba.

SOUND EQUIPMENT

MAIN P.A. ALL FLOWN (INCLUDING SUBS)

- 18 (9+9) Self powered MEYER M'ELODIE speakers
- 6 (3+3) Self powered MEYER HP 600 speakers

FRONT-FILL

- 4 MEYER MM-4XP speakers

OUTFILL

- 2 (1+1) Self powered MEYER UPA 1P speakers.

DELAY UNDER 1st BALCONY

- 4 MEYER MM-4XP speakers

P.A. F.O.H.

Located at the end of the audience seating area.

- 1 DIGICO SD8. FX'S and EQ'S on board.
- 1 GALILEO 616 Processor
- 1 TC ELECTRONIC M4000 FX Processor
- 1 CD player
- 1 Talk Back Microphone

MONITORS

1	DIGICO SD8. FX's and EQ's on board
10	MEYER UM -1P
1	Talk Back Microphone

IEM SYSTEMS

4	COMPLETE SENNHEISER IEM 300 G2 (Transmitter-Receiver)
4	SENNHEISER IE4 headsets

SIDEFILL

2 (1+1)	Self powered MEYER speakers UPA 1P mounted on stands
---------	--

MICROPHONE LIST

Standrad microphone set consisting in 4 Senheiser E604, 1 Senheiser MD 421, 2 Senheiser MKH-416, 8 Shure SM 58, 6 Shure SM 57, 3 Shure Beta 98 Horn clip, 1 Shure Beta 52, 2 Shure Beta 57A, 2 Shure Beta 58A, 1 Shure Beta 91A, 2 Shure PG 48 w/switch, 2 DPA 4066 omni headset, 2 DPA 4061 FM, 3 Neumann KM 184, 2 AKG 414, 2 Neumann KMS 105, 2 AKG 300B equipped with CK 93 capsule, 12 active D.I. Box BSS AR 133...

Set of wireless microphones consisting in 8 complete SENNHEISER Evolution G3 systems, including 4 hand transmitter and 4 belt packs.
Microphone stands needed (18 tall + 12 shorts)
Cables needed

INTERCOM SYSTEM

1	Central station located at the cabin on 2nd floor
1	Remote station fixed on stage side
8	Wired stations

LIGHTING EQUIPMENT**LAMPS**

12	Rockettes PAR 64 1000 w CP62 / n° 5
4	PC 1000 w
8	PC 2000 w
6	Robert Juliat 13-42° 1000 w
8	Robert Juliat 15-42° 2000 w
6	Martin MAC 600
4	Martin MAC 500
8	Martin 301 Wash 350 w
6	Martin MAC 2000
6	JARAG-5 PAR 30 CHROMELECH (blinders)
2	FLASH ATOMIC 3000
2	Fog Machines LOOK (UNIQUE 1500 w)
2	Turbina Martin JEM AF-1
1	Lighting desk ETC Element 40
1	Lighting desk AVOLITES Pearl 2008

Working light on stage during set up and unset.

DIMMERS

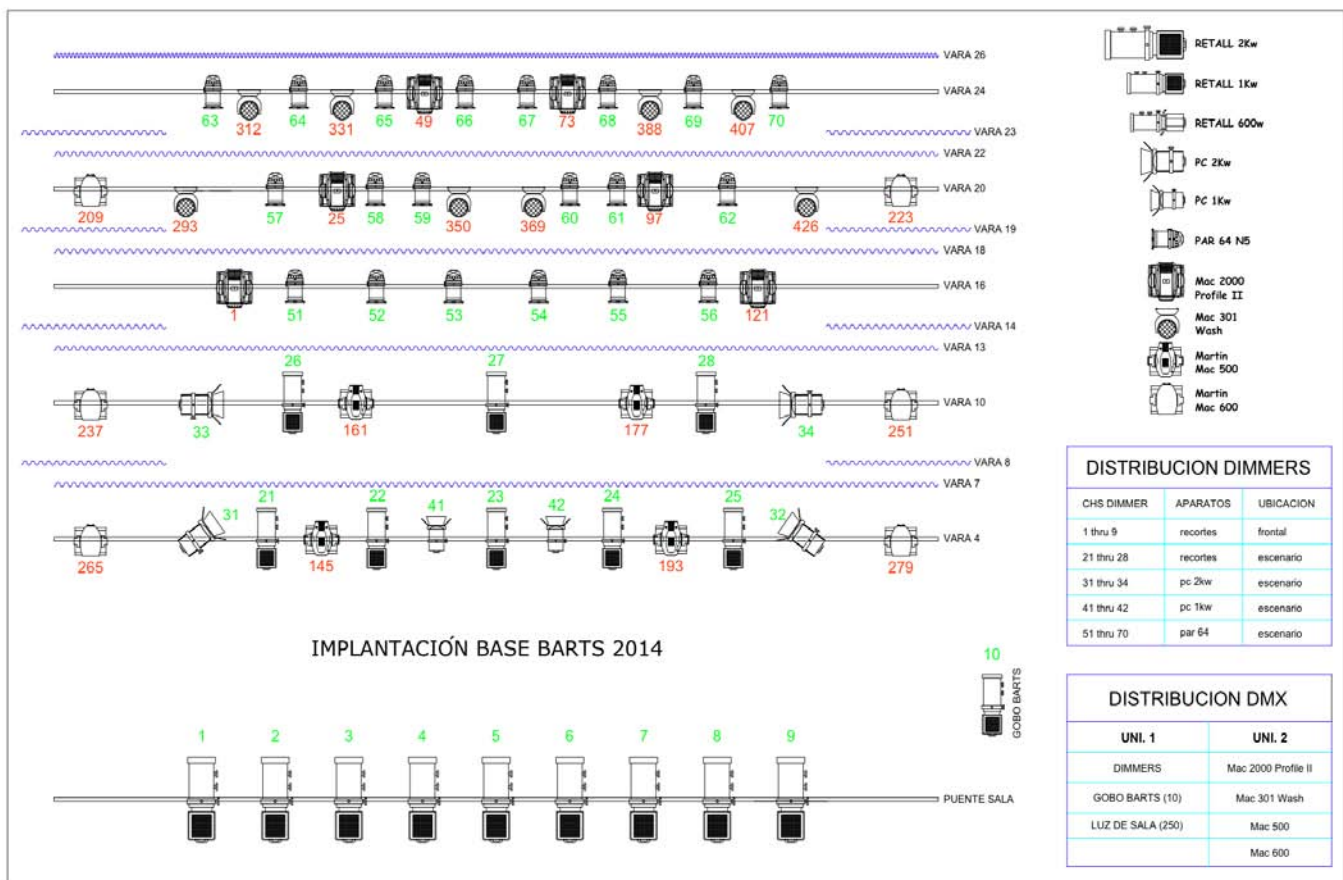
168	Canales de Dimmer de 3 Kw each.
18	Canales de Dimmer de 5 Kw each.

HOUSE LIGHTS

Houselights will be controlled through the Show light desk to have an easy access when opening the hall and starting/ending the show.

LIGHTING PLOT

Companies light equipment will be adapted as much closer as possible to the following light plot:



VIDEO (Optional)

- 1 Video Projector CHRISTIE ROASTER S 16 K 16.000 Lumens DLP 3-DMD 1400 x 1050
- 1 Lens CHRISTIE ROADSTER 1.45-1.1:1 Serie 16 K

PIANO (Optional)

There is a grand piano available at the venue.

LOAD IN-OUT ACCESS

Load in access will be done through the door located at Abad Safont Street.

Door measures 1,90 m x 3,70 m high and gives access to a lifter with direct access to the stage.

Lifter measures 2,20 m x 1,90 m squared m and have a maximum lift of 2000 kg.



Access to loading area is done from Ronda Litoral Exit 21 - Paral·lel

